



**Beijing Jingneng Clean Energy Co., Limited**

**00579**

13.10B

([www.shclearing.com](http://www.shclearing.com))

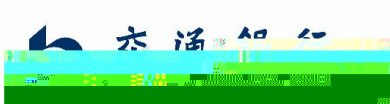
([www.chinamoney.com.cn](http://www.chinamoney.com.cn))

2014

•

---

2014







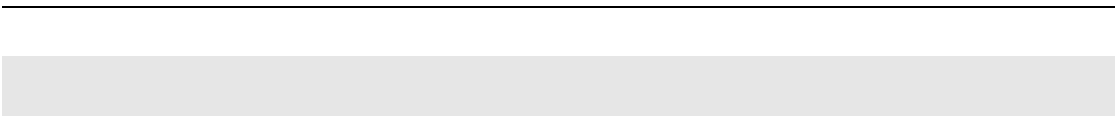












1

2

3

1

---

2

3

4

5

---

6

1

2

3



4

5

6

---

7

8

9

CDM

---

1

O š I J Ň Â 0000 cTf 0 0 0 .2m /F5 1 ( ě

2























---

5-1

2013 6 30

	451,235.94	73.37%

	37,265.00	6.06%
H	126,489.60	20.57%
	614,990.55	100.00%

1

2

5-2

			/	

---

			/	

3

5-3 10

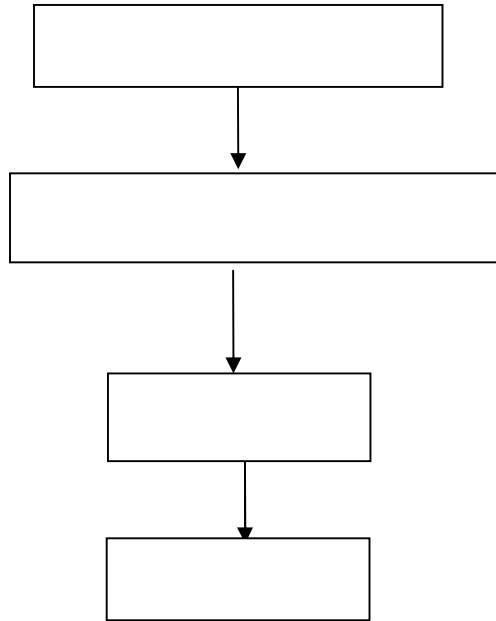
2013 6 30

		%	
	5,780,096,811.00	94.70	-

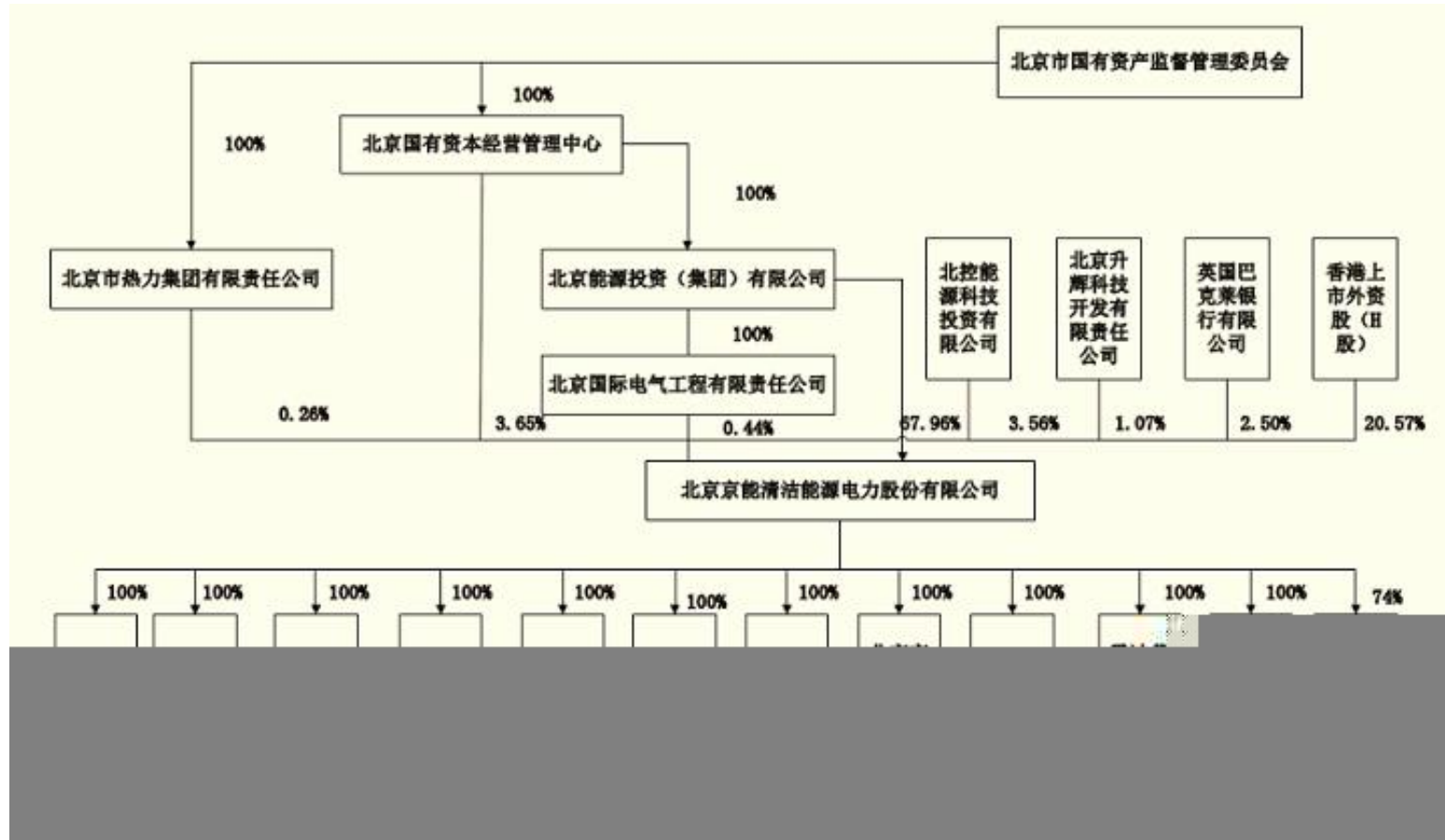
---

5-1 A

2013 6 30



5-1 B

















---

3

4

5

---

6

7

---

10

11

1



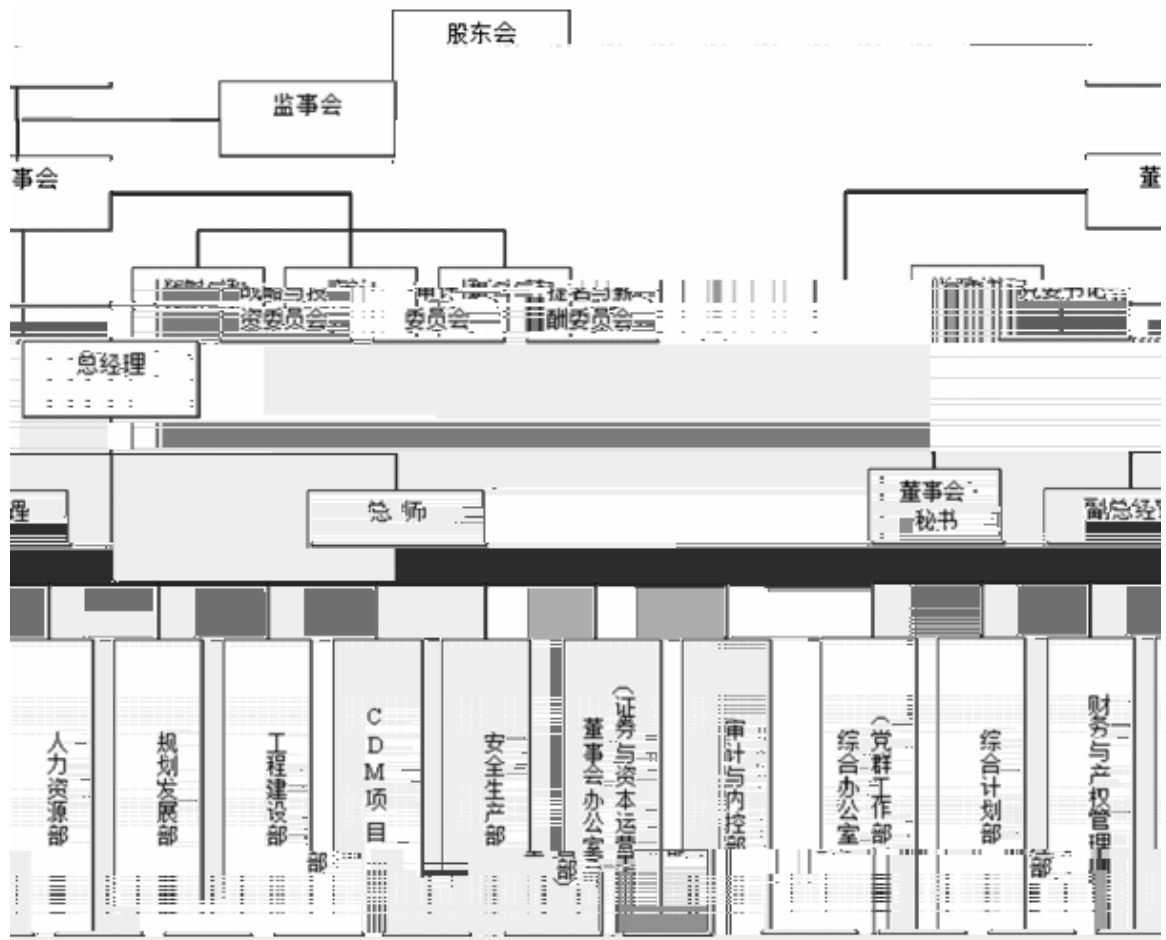
2

3





5-2



---

2

3

4

5

---

6

7 CDM

8

9



10

1



1

2

3

2



3

4

---

5

6

ã fl

---

1

2

3

8



---

9

10

11

12

L26 12 0 0 12 0 0 Tmx 0 Tmx 0 Tmx



---


5-9






1

1



2

3



2

3









---

	2013		2012		2011		2010	
		(%)		(%)		(%)		(%)
%	28.77		27.93		23.41		18.19	

1

1





---







---

		( )		(MWh)	





	2013	2012	2011	2010

---

### 3 CDM

---



1

2



1

2

3







---

5-18

					MW	
	--	--	--	--	160.00	--

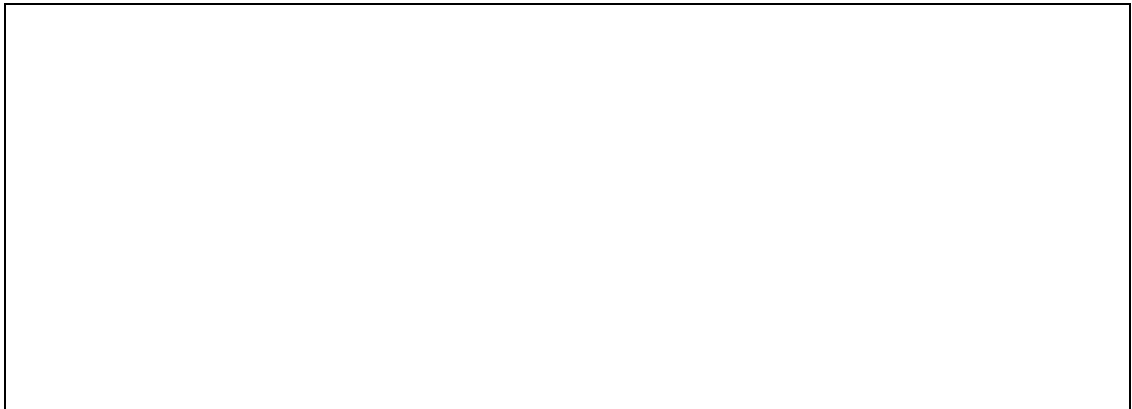


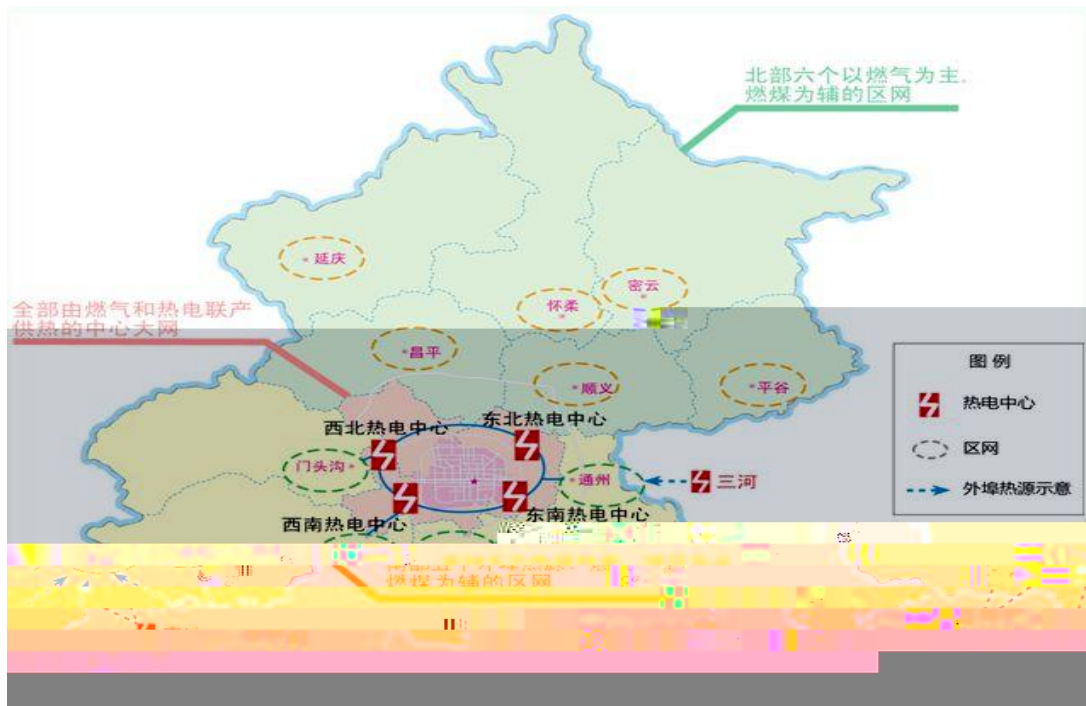
2

3

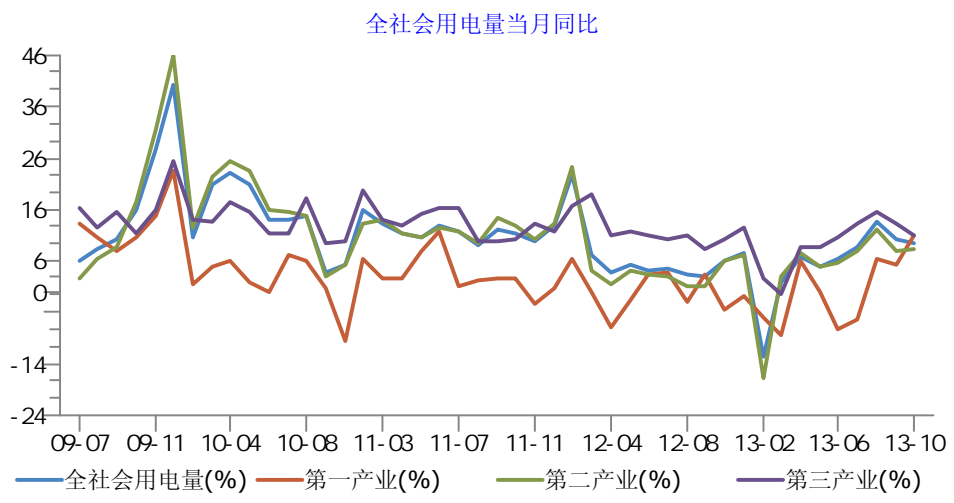
---

5-3 '1+4+N'+X

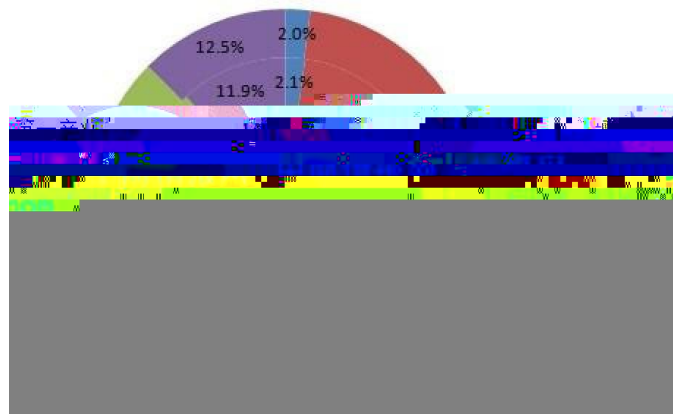




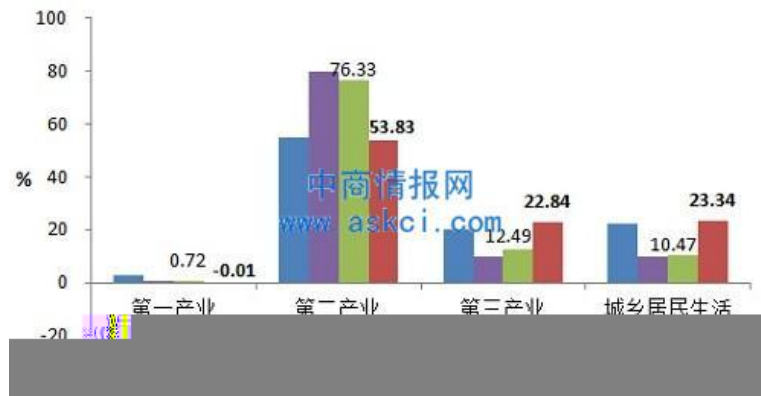
5-5



5-6 2011-2012



5-7 2009-2012



---

2

3



5-19 2012

表 1

单位:万千瓦

	全国	水电	火电	核电	风电	太阳能	其他
2012 年发电装机容量	114491	24890	81917	1257	6083	328	16
其中当年新增装机容量	8020	1551	5065	—	1285	119	





5-20

			2010	2015		







---

1

2

3

4









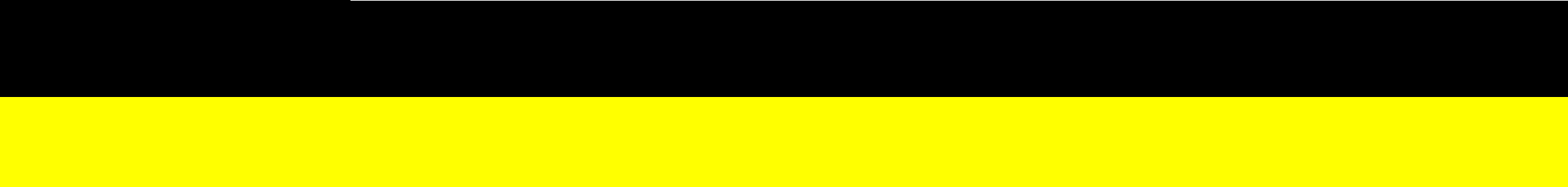
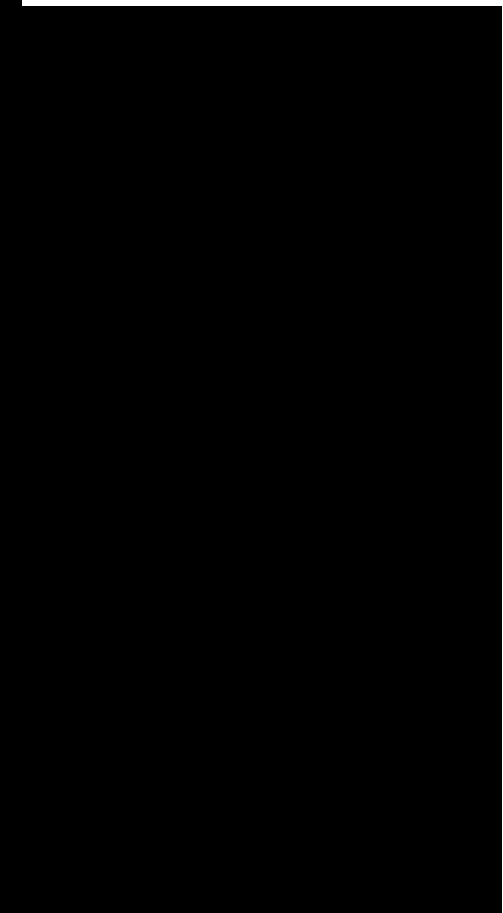
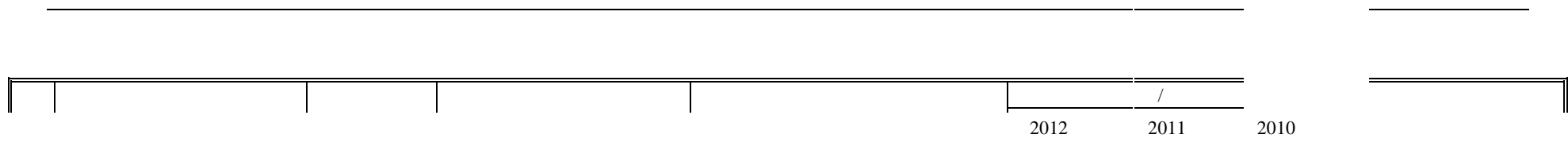
---

5

6











---

6-3 2011

					i



---

	2013 6 30	2012 12 31	2011 12 31	2010 12 31
	552,502.67	612,107.77	505,079.87	244,801.13

---

	2013	2012	2011	2010
	6 30	12 31	12 31	12 31

	2013 1-6	2012 年度	2011	2010
“-”	72,349.17	111,560.43	107,339.31	54,721.85
“-” )	62,803.84	98,965.69	90,108.29	49,536.83
	57,907.07	91,141.68	80,961.77	46,229.15

6-9

	2013 1-6	2012	2011	2010
	427,595.96	491,883.58	524,512.09	478,504.60
	186,310.06	311,132.13	333,815.48	319,153.64
	241,285.90	180,751.44	190,696.61	159,350.96
	17,233.67	82,768.12	50,994.93	38,175.78
	159,530.36	519,955.44	381,094.31	235,667.07
	-142,296.70	-437,187.32	-330,099.38	-197,491.29

---

	2013 1-6	2012	2011	2010







---

6-12

	2013 1-6	2012	2011	2010
	12,679.59	24,858.19	26,663.22	22,882.91
				4,573.71

	2013 1-6	2012	2011	2010
	-400.44	687.09	-401.99	0.00
	-57,007.62	-62,257.83	158,625.35	-214.89
	48,600.23	105,607.85	167,865.68	9,240.33

6-13

	2013 6 30	2012 12 31	2011 12 31	2010 12 31

6-14

	2013年6月30日		2012年12月31日		2011年12月31日		2010年12月31日	
		%		%		%		%
	552,502.67	17.95	612,107.77	20.35	505,079.87	20.64	244,801.13	12.21



6-15

	2013 6 30	2012 12 31	2011 12 31	2010 12 31
	159,838.53	201,455.31	149,992.45	118,635.81

6-16

	2012		2011		2010			
	159,838.53	100.00	201,455.31	100.00	149,992.45	100.00	118,635.81	100.00



					%
			145,300.30		90.91

3

6-20

	2013 6		2012		2011		2010		2009	
		(%)		(%)		(%)		(%)		(%)
	20,431.21	100.00	17,765.02	100.00	10,271.17	100.00	11,241.53	100.00	30,992.93	100.00

6-21

	2013 6 30			2012 12 31			2011 12 31			2010 12 31		
		(%)			(%)			(%)			(%)	
	4,618.68	100.00		2,120.78	100.00		3,633.31	100.00		4,643.63	100.00	

---

6-22 2012

f 95.1F 119.2 0 1 9

==  
%

	2013 6		2012		2011		2010	
		%		%				
	151,620.62	100.00	119,830.50	100.00	80,268.23	100.00	31,852.91	100.00

6-25 2012

					%	



---

	2013		2012年12月31日		2011年12月31日		2010年12月31日	
		(%)		(%)		(%)		(%)
	6,967.70	100.00	6,980.01	100.00	5,144.47	100.00	4,060.91	100.00

2

1

2

---

6-28

	2013 6	2012	2011	2010
	1,864,655.38	1,649,531.75	1,334,375.11	1,298,825.52



	2013年6月30日		2012年12月31日		2011年12月31日		2010年12月31日	
		%		%		%		%
	787,323.73	37.67	657,376.05	31.87	714,440.10	46.68	390,693.51	30.13

\_\_\_\_\_

.....

.....

\_\_\_\_\_

.....

\_\_\_\_\_

||

||

|

|

|

---

6-31



---

5

6

6-35

	2013		2012		2011		2010	
	6	%		%		%		%
	128,586.07	100.00	125,689.54	100.00	27,560.68	100.00	8,384.16	100.00

6-36      2012

				(%)
		97,000.30		77.17

					(%)
		120,697.30			93.87

2

1

	2013 6 30		2012 12 31		2011 12 31		2010 12 31	
		%		%		%		%
	827,102.94	100.00	929,729.36	100.00	811,643.49	100.00	900,917.00	100.00







2

3

4







	2013 1-6		2012		2011		2010	
		%		%		%		%
	71.42	100.00	3,169.54	100.00	401.00	100.00	70.24	100.00

6-46

	2013 1-6	2012	2011	2010
	241,285.90	180,751.44	190,696.61	159,350.96
	-142,296.70	-437,187.32	-330,099.38	-197,491.29
	-141,962.16	219,673.90	320,157.96	25,842.85
	-400.44	602.87	-470.15	-740.48
	-43,373.39	-36,159.11	180,285.04	-13,037.97
	195,195.87	238,569.26	244,344.02	64,058.98

---

2

3

6-47

	2013 6 30	2012 12 31	2011 12 31	2010 12 31

---

6-48

	2013 6 30	2012 12 31	2011 12 31	2010 12 31
/				
/				



---

1

6-49

	2013 6	2012	2011	2010
	(%)	(%)		

					(%)
		527,100.00			

1  
2

---

6-53

		(		

---



---

		(		
		1,656.00		

1

6-54


2

6-55

2012


3

6-56

	2013	6	30	2012	12	31

6-57

2013 6 30

					(%)	



---

					(%)	


6-60

	2013		2012		2011		2010	
		%		%		%		%
	23,335.08	100.00	35,198.66	100.00	1,093.28	100.00	1,355.20	100.00

6-61

	2013		2012	
		%		%
	653.54	100.00	0.00	0.00 t



---

	2013		2012	
		(%)		(%)

---

---

6-68                      2013    6    30

		(%)
	270,033.38	89.85

1

6-69

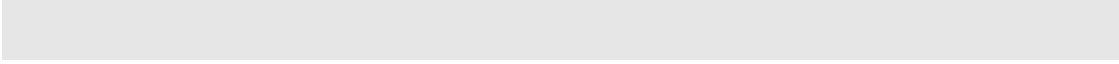
	2013    6	2012	2011	2010
	521,811.86	508,742.80	349,543.30	257,780.40

2

6-70

	2013    6	2012	2011	2010
	1,636.48	2,066.40	2,421.00	1,960.20







---

3

A.

B.



---

7-2


7-3




---

2013

2013

2013

8-1 2013

	2012 12 31	2013 9 30		%	













1

2

---























---

H











(此页无正文，为《北京京能清洁能源电力股份有限公司 2014 年度第一期短期融资券募集说明书》盖章页)

北京京能清洁能源电力股份有限公司

二〇一四年三月十日

